

iMON & iMEDIAN Installation Guide

Redefine Your Home Theater

iMON *SoundGraph, Inc.*



Revised on November 11, 2005

SoundGraph, Inc.

Table of Contents

In your Package	3
1. iMON 2.4G LT	3
2. iMON 2.4G DT	3
3. iMON Station	4
4. iMON Knob	4
5. iMON Inside	4
6. iMON VFD	4
7. iMON OEM	5
S/W, H/W Installation	6
1. S/W Installation	6
2. H/W (IR Receiver) Installation	6
1) External RF Receiver (iMON 2.4G LT) Installation	6
2) Internal RF Receiver (iMON 2.4G DT) Installation	6
3) External IR Receiver (iMON Station, iMON Knob) Installation	9
4) Internal IR Receiver (iMON Inside, iMON VFD) Installation	9
FCC Certification	12
CE Certification	13
About S/W Updates	14
About SoundGraph, Inc.	15

In your Package



SoundGraph, Inc. has six different iMON models which have different types of Remote Controller and Receiver. Please check the components in your box according to the following picture.

1. iMON 2.4G LT



In the Box : 1 iMON 2.4G Remote Controller, 1 iMON 2.4G LT Receiver (External RF Receiver), 1 Installation CD (iMON Manager, iMEDIAN), 1 Quick Guide, 2 AAA Batteries

2. iMON 2.4G DT



In the Box : 1 iMON 2.4G Remote Controller, 1 iMON 2.4G DT Receiver (Internal RF Receiver), 2 USB Connection Cable (Internal, External), 1 Low Profile PCI Bracket, 1 RF Antenna, 1 Installation CD (iMON Manager, iMEDIAN), 1 Quick Guide, 2 AAA Batteries

3. iMON Station



In the Box : 1 iMON PAD Remote Controller, 1 iMON Station (External IR Receiver), 1 Extension USB Cable, 1 Installation CD (iMON Manager, iMEDIAN), 1 Quick Guide, 2 AAA Batteries

4. iMON Knob



In the Box : 1 iMON PAD Remote Controller, 1 iMON Knob (External IR Receiver), 1 Extension USB Cable, 1 Installation CD (iMON Manager, iMEDIAN), 1 Quick Guide, 2 AAA Batteries

5. iMON Inside



In the Box : 1 iMON PAD Remote Controller, 1 iMON Inside (Internal IR Receiver), 1 Extension USB Cable, 1 Installation CD (iMON Manager, iMEDIAN), 1 Quick Guide, 2 AAA Batteries

6. iMON VFD



In the Box : 1 iMON PAD Remote Controller, 1 iMON VFD (Internal IR Receiver), 1 Extension USB Cable, 1 Installation CD (iMON Manager, iMEDIAN), 1 Quick Guide, 2 AAA Batteries

7. iMON OEM

SoundGraph provides iMON OEM version to different OEM partners who use iMON/iMEDIAN for their products. iMON OEM version has a different packages according to the request of our OEM partners. Please check the Remote Controller, IR Receiver and Installation CD in your package.

S/W, H/W Installation



Please read the Quick Guide and this Installation Guide carefully before your installation of iMON IR Receiver.

1. S/W Installation

Please install the S/W first before you connect the H/W to your PC. Insert 'iMON, iMEDIAN Installation CD' to your CD ROM, and install the S/W application to the PC according to the following installation process. There are two different applications on the installation CD. iMON is the application that manages and sets the remote controller and its commands. iMEDIAN is the application which could be controlled by iMON remote controller and used to enjoy the media files and devices on PC. According to the Installation Wizard, you can easily install these two applications. Be sure that you need to assign the proper remote controller that you have during the Installation Wizard.

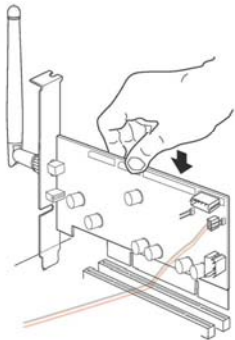
2. H/W (RF, IR Receiver) Installation

1) External RF Receiver (iMON 2.4G LT) Installation

Connect your External iMON RF Receiver (iMON 2.4G LT) to your USB port. If you connect the iMON RF Receiver before the S/W installation, then assign the H/W driver according to the 'Found New H/W Wizard'. Select CD ROM drive for searching H/W driver which has the installation CD inside.

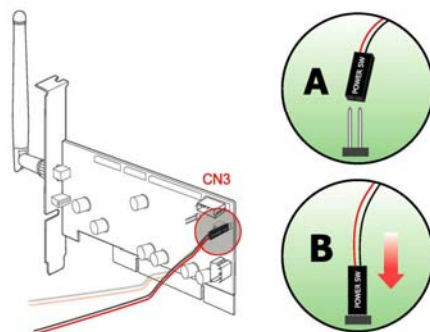
2) Internal RF Receiver (iMON 2.4G DT) Installation

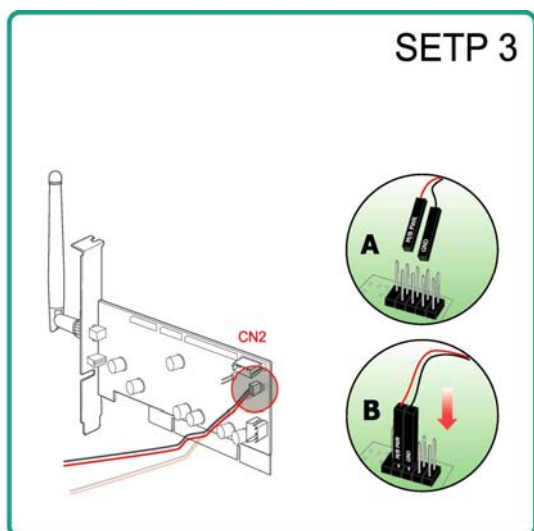
The internal RF Receiver could be loaded to the PCI slot on the mainboard. The additional feature of internal type iMON RF receiver is that you can power on your PC system using the power button of the remote controller. After turn off your PC system, open the PC case and connect the cables to its proper pin refer to the following picture. Internal RF receiver is connected to mainboard with two cables and PC case with one cable. You should be careful to connect these three cables refer to your mainboard manual. If you connect the iMON RF Receiver before the S/W installation, then assign the H/W driver according to the 'Found New H/W Wizard'. Select CD ROM drive for searching H/W driver which has the installation CD inside.

STEP 1

Step 1. Plug 'iMON 2.4G DT receiver' to the PCI slot of mainboard.

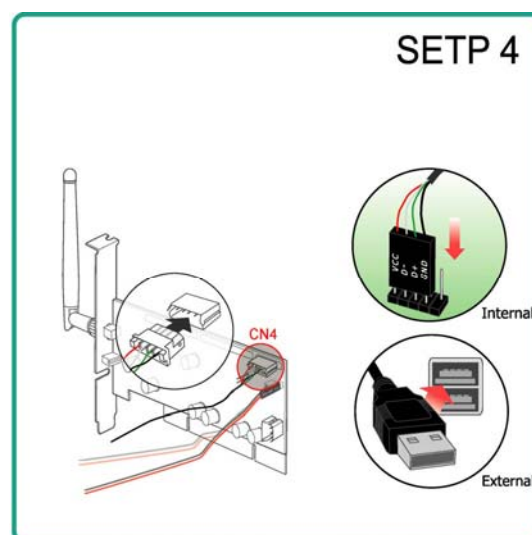
Disconnect 'PC Case Power Button Cable' from the 'Power Switch' connector on the main board and Connect 'PC Case Power Button Cable' to 'CN3 connector' on the iMON 2.4G DT receiver.

STEP 2



Step 3. Connect 'Mainboard Power Switch Cable' to the 'Power Switch' Connector on the mainboard from 'CN2 connector' on the iMON 2.4G DT receiver.

Step 4. Connect 'Internal or External USB cable' to the 'mainboard internal USB connector' or 'external USB connector' and 'CN4 connector' on the iMON 2.4G DT receiver.



CN1 connector is reserved for the future use. You don't need to connect any cable to this CN1 connector.

iMON 2.4G DT Installation Process

Line Color	Additional USB Port Pin Name
RED	VCC , POWER, USBPOWER
WHITE	D- , DATA-, USBP#-, UP#-, P#-
GREEN	D+ , DATA+, USBP#+, UP#+, P#+

BALCK

GND, GROUND

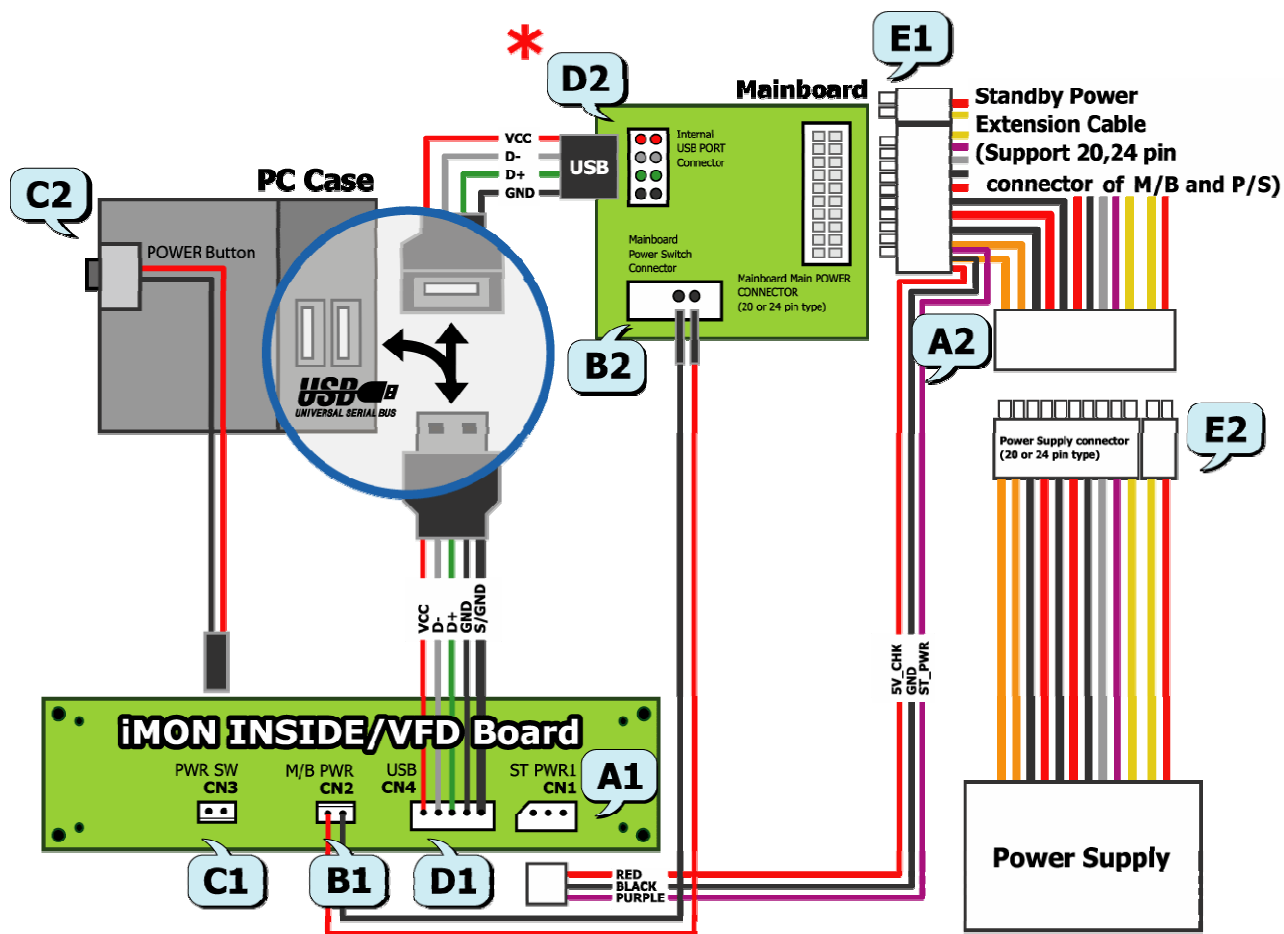
USB Port Pin Name

3) External IR Receiver (iMON Station, iMON Knob) Installation

Connect your External iMON IR Receiver (iMON Station or iMON Knob) to your USB port. If you connect the iMON IR Receiver before the S/W installation, then assign the H/W driver according to the 'Found New H/W Wizard'. Select CD ROM drive for searching H/W driver which has the installation CD inside.

4) Internal IR Receiver (iMON Inside, iMON VFD, iMON OEM) Installation

The additional feature of internal type iMON IR receiver is that you can power on your PC system using the power button of the remote controller. Internal iMON IR Receiver can be loaded to the 3.5' (iMON Inside) or 5.25' (iMON VFD) disk drive bay. Some iMON OEM versions already loaded on the cases. After turn off your PC system, open the PC case and connect the cables to its proper pin refer to the following picture. Internal IR receiver is connected to mainboard with two cables, PC case with one cable, Power Supply with another cable. You should be careful to connect these four cables refer to your mainboard manual. If you connect the iMON IR Receiver before the S/W installation, then assign the H/W driver according to the 'Found New H/W Wizard'. Select CD ROM drive for searching H/W driver which has the installation CD inside.



Internal IR Receiver (iMON Inside, iMON VFD) Connection Diagram

A1 : (3pin, iMON Inside/VFD 'ST PWR1' Connector)	A2 : (3pin, Mainboard Power Extension Cable)
① Stand-By Power Connection Cable	
B1 : (2pin, iMON Inside/VFD 'M/B PWR' Connector)	B2 : (2pin, Mainboard Power Switch Connector)
② Mainboard Power Switch Connection Cable	
C1 : (2pin, iMON Inside/VFD 'PWR S/W' Connector)	C2 : (2pin, PC Case Power Button)
③ PC Case Power Switch Connection Cable	
D1 : (5pin, iMON Inside/VFD USB Connector)	D2 : (4pin, Mainboard USB Internal Connector)
④ Mainboard USB Connection Cable	

Internal IR Receiver (iMON Inside, iMON VFD) Connector List

The names of the internal USB port pins on the mainboard manual are different with the manufacturer. Please refer to the following table to connect the USB cable.

Line Color	Additional USB Port Pin Name
RED	VCC , POWER, USBPOWER
WHITE	D- , DATA-, USBP#-, UP#-, P#-
GREEN	D+ , DATA+, USBP#+, UP#+, P#+
BALCK	GND , GROUND

USB Port Pin Name

FCC Certification

This device complies with Part15 of the FCC Rules. Operation is subject to the following two conditions: (1) this device may not cause harmful interference, and (2) this device must accept any interference received, including interference that may cause undesired operations.

INFORMATION TO THE USER

This equipment has been tested and found to comply with the limits for a Class B digital device, pursuant to part 15 of the FCC Rules. These limits are designed to provide reasonable protection against harmful interference in a residential installation. This equipment generates, uses and can radiate radio frequency energy and, if not installed and used in accordance with the instructions, may cause harmful interference to radio communications. However, there is no guarantee that interference will not occur in a particular installation. If this equipment does cause harmful interference to radio or television reception, which can be determined by turning the equipment off and on, the user is encouraged to try to correct the interference by one more of the following measures:

- Reorient or relocate the receiving antenna.
 - Increase the separation between the equipment and receiver
 - Correct the equipment into an outlet on a circuit different from that to which
The receiver is connected.
 - Consult the dealer or an experienced radio/TV technician for help.
-

WARNING (Part 15.21)

Changes or modifications not expressly approved by the manufacturer could void the user's authority to operate the equipment.

"Note: The manufacturer is not responsible for any Radio or TV interference caused by unauthorized modifications to this equipment. Such modifications could void the user's authority to operate the equipment."

CE Certification

Declaration of Conformity

I hereby declare that the product

USB RF Remote Controller, iMON 2.4G, iMON 2.4GLT/DT

satisfies all the technical regulations applicable to the product within the scope of Council Directives 73/23/EEC, 89/336/EEC and 99/5/EC:

EN 60 950

EN 301 489-1V1.3.1, EN 301 489-3 V.1.4.1

EN 300 440-1 V1.3.1

EN 50 371

All essential radio test suites have been carried out.

MANUFACTURER or AUTHORISED REPRESENTATIVE:

– **Address:**

SoundGraph Inc.

621-1, Yeoksam1-dong, Gangnam-gu

Seoul Korea

This declaration is issued under the sole responsibility of the manufacturer and, if applicable, his authorised representative.

– **Point of contact:**

SoundGraph Inc TEL/FAX: +82-2-569-2097/+82-2569-2090

Korea, 11/21/2005

About S/W Updates

iMON and iMEDIAN will be continuously updated through the SoundGraph website (<http://www.soundgraph.com>). If you have any difficulties to use iMON, iMEDIAN and iCASTER or have any question about our product, please send an email to iMON@soundgraph.com or post the message on our website.

About SoundGraph, Inc.

- Address

621-1 YeokSam 1-Dong, GangNam-Gu, Seoul, Korea 135-908

- Telephone

+82-2-569-2097

- Fax

+82-2-569-2090

- Web Site

<http://www.soundgraph.com>

- E-Mail

iMON Development Team : iMON@soundgraph.com

iMON Sales Team : sales@soundgraph.com

1. It is strictly prohibited to copy or publish this user's manual online without consent of SoundGraph Co., Ltd.
2. The contents of this manual are subject to change without any prior notice for product function addition and performance enhancement.
3. iMON is the registered trademark for USB IR reception device of SoundGraph Co., Ltd.
4. Other mentioned software brand names are registered trademarks of each owner.